

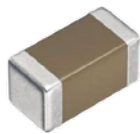
# F420006



## 2000Vdc External Voltage Bias Fixture

Frequency	DC to 1 MHz
Max. Voltage	±2000V peak max.(AC+DC)
Terminal Connector	4-Terminal Pair, BNC
Dimensions (approx.)	180x150x115mm (W/H/D)
DUT Connection	2-Terminal
Operating Temperature	0° C to 55° C
Applicable Models	6632 · 6630

SMD



DIP



Freq.

1MHz

5MHz

10MHz

20MHz

30MHz

50MHz

## Applicable Models



6630



6632